

5168-001

# ARDEN P.U.D. PLAT 1

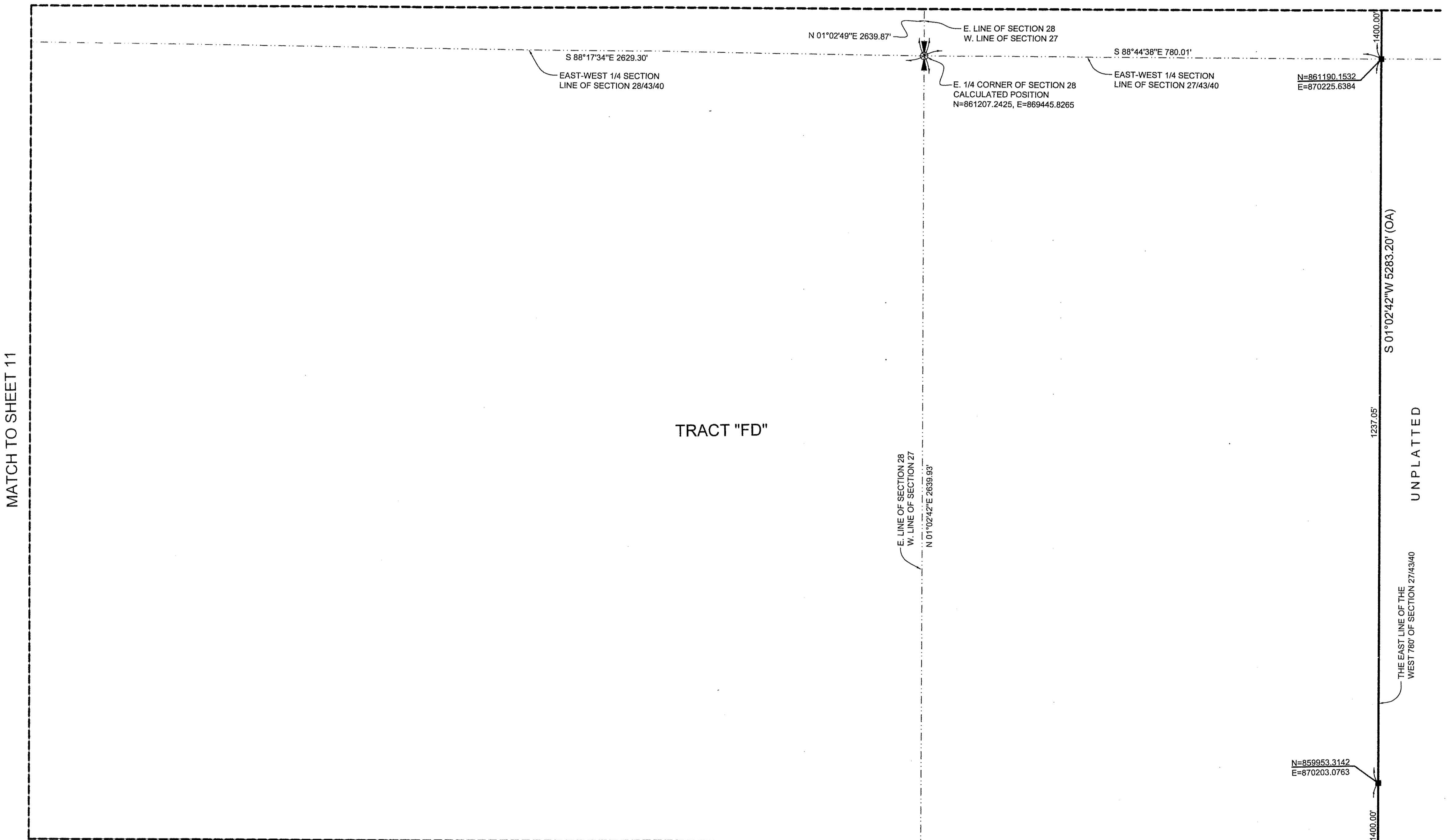
BEING A PARCEL OF LAND, LYING IN SECTIONS 21, 22, 27, 28, 33 AND 34,  
TOWNSHIP 43 SOUTH, RANGE 40 EAST, PALM BEACH COUNTY, FLORIDA.

SHEET 18 OF 20

49

COUNTY OF PALM BEACH )  
 STATE OF FLORIDA ) SS  
 THIS PLAT WAS FILED FOR RECORD AT )  
 \_\_\_\_\_ M. THIS \_\_\_\_\_ DAY OF )  
 \_\_\_\_\_ 2016, AND DULY )  
 RECORDED IN PLAT BOOK NO. \_\_\_\_\_ )  
 ON PAGE \_\_\_\_\_ THRU \_\_\_\_\_ )  
 SHARON R. BOCK,  
 CLERK AND COMPTROLLER  
 BY: \_\_\_\_\_, D.C.

MATCH TO SHEET 19



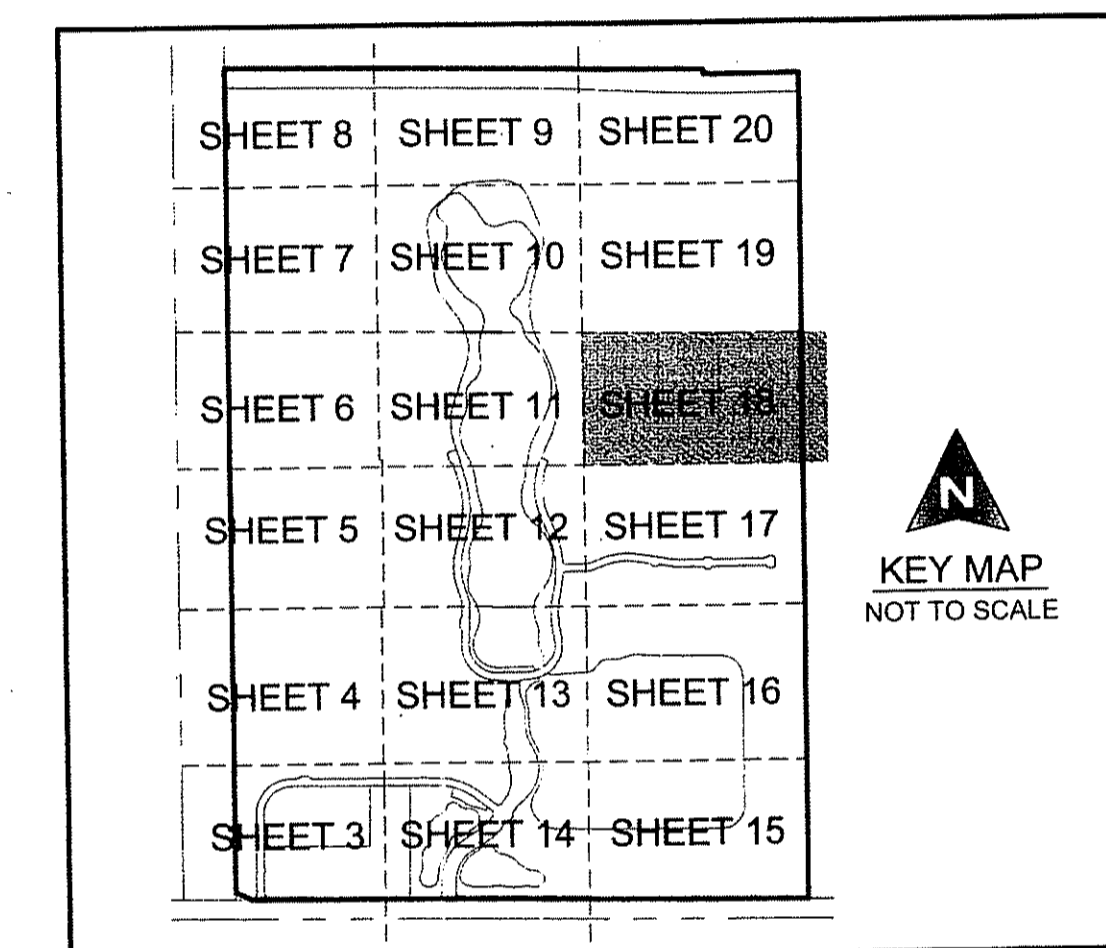
TRACT "FD"

MATCH TO SHEET 11

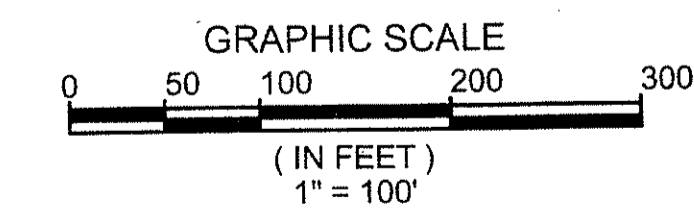
MATCH TO SHEET 17

S 01°02'42\"/>

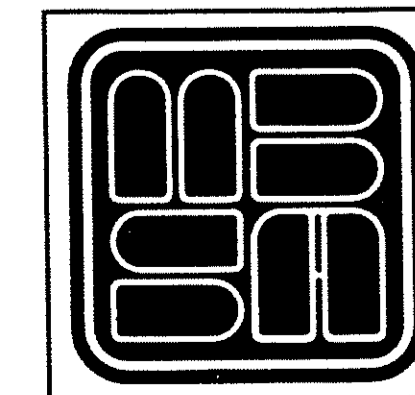
UNPLATTED



COORDINATE NOTE:  
 STATE PLANE COORDINATES SHOWN ARE GRID DATUM, NAD 83 1990  
 ADJUSTMENT, FLORIDA EAST ZONE, COORDINATE SYSTEM 1983 STATE  
 PLANE, TRANSVERSE MERCATOR PROJECTION  
 LINEAR UNIT = US SURVEY FEET  
 ALL DISTANCES ARE GROUND  
 SCALE FACTOR = 0.99999219  
 GROUND DISTANCE X SCALE FACTOR = GRID DISTANCE  
 BEARINGS AS SHOWN HEREON ARE GRID DATUM, NAD 83 1990  
 ADJUSTMENT, FLORIDA EAST ZONE.



SHEET 18 OF 20



**MICHAEL B. SCHORAH  
 & ASSOCIATES, INC.**  
 1850 FOREST HILL BLVD., SUITE 206  
 WEST PALM BEACH, FLORIDA 33406  
 EB# 2438 TEL. (561) 968-0080 FAX. (561) 642-9726 LB# 2438

ARDEN P.U.D. PLAT 1